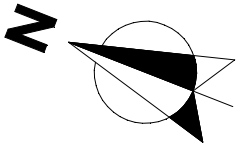


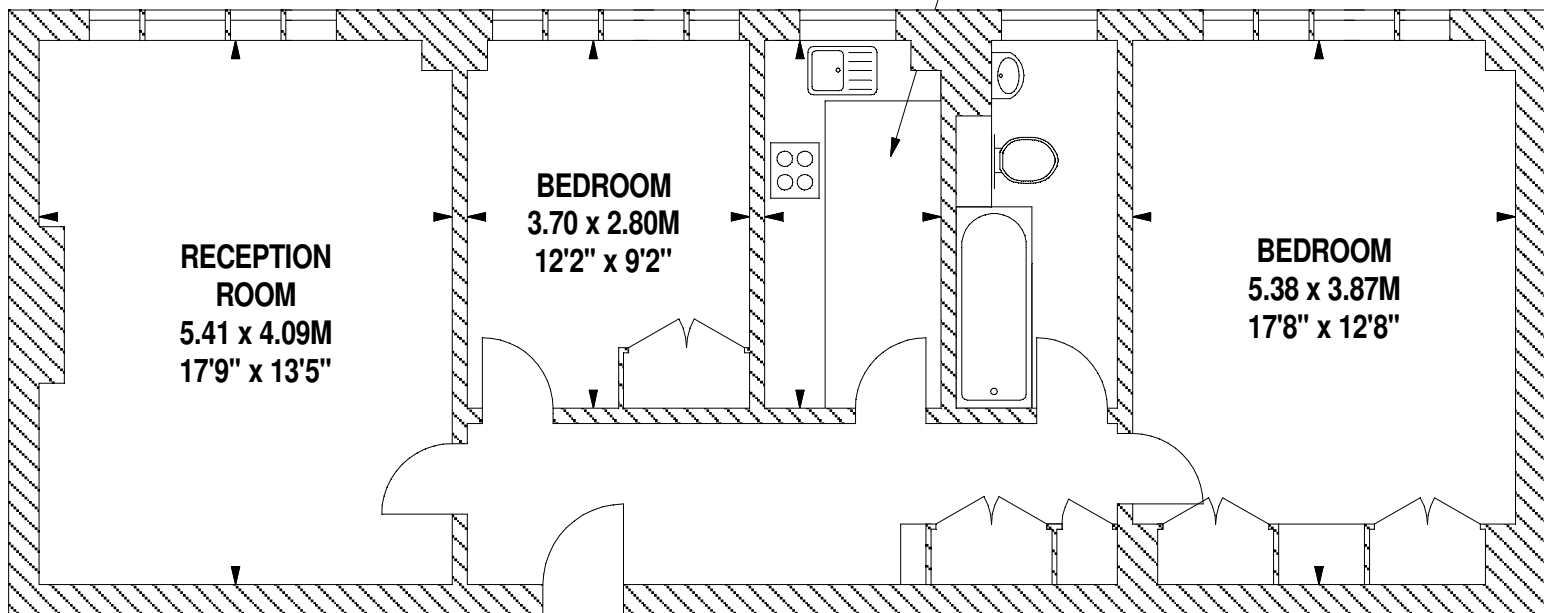
**Flat 20**  
**Third Floor**  
**Richmond Court,**  
**Sloane Street, SW1**

Approximate gross internal area  
**79 sq m / 850 sq ft**



**Harriet Walk**

**KITCHEN**  
**3.70 x 1.77M**  
**12'2" x 5'10"**



**Scale 1:75**

Scale floor plans produced by Mays Floorplans © . Tel 020 3397 4594  
All measurements are maximum, and include wardrobes and window bays where applicable