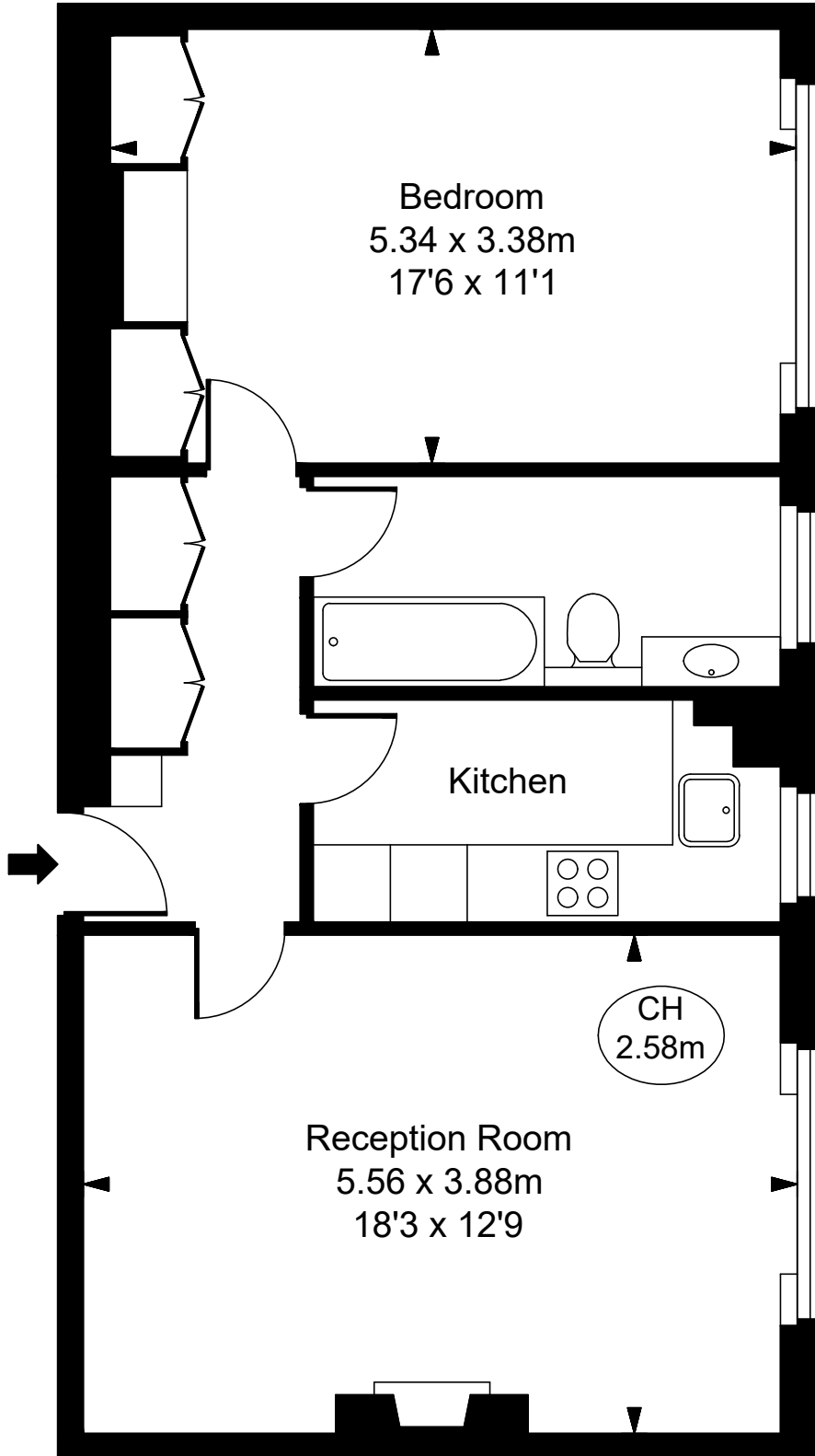


35 Richmond Court,
Sloane Street, SW1X
Approximate Gross Internal Area
58.48 sq m / 629 sq ft
(CH = Ceiling Heights)



Fourth Floor

ILLUSTRATION FOR IDENTIFICATION PURPOSES ONLY
ALL MEASUREMENTS ARE MAXIMUM, AND INCLUDE WINDOW BAYS AND WARDROBES WHERE APPLICABLE
THIS PLAN MUST NOT BE REPRODUCED BY ANY OTHER PERSON WITHOUT PERMISSION