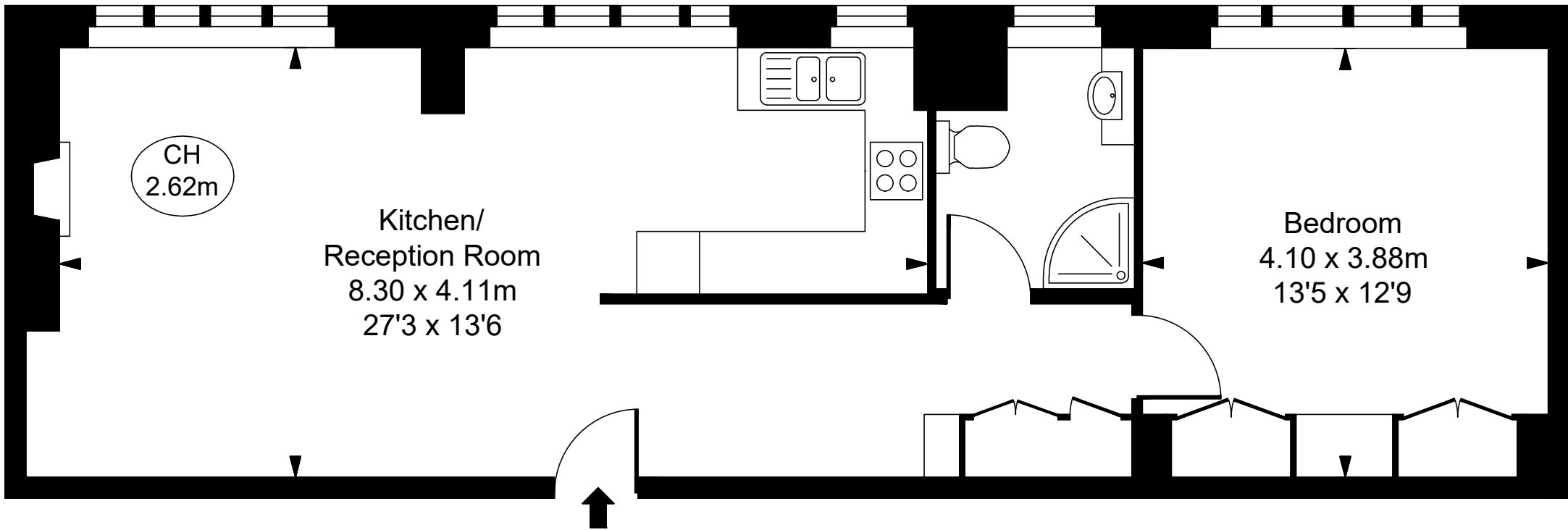


58 Richmond Court,
200 Sloane Street, SW1X

Approximate Gross Internal Area
59.76 sq m / 643 sq ft

(CH = Ceiling Heights)



Sixth Floor

This plan is not to scale. It is for guidance and not for valuation purposes.
All measurements and areas are approximate only, and have been prepared in accordance with the current edition of the RICS Code of Measuring Practice.
© Fulham Performance