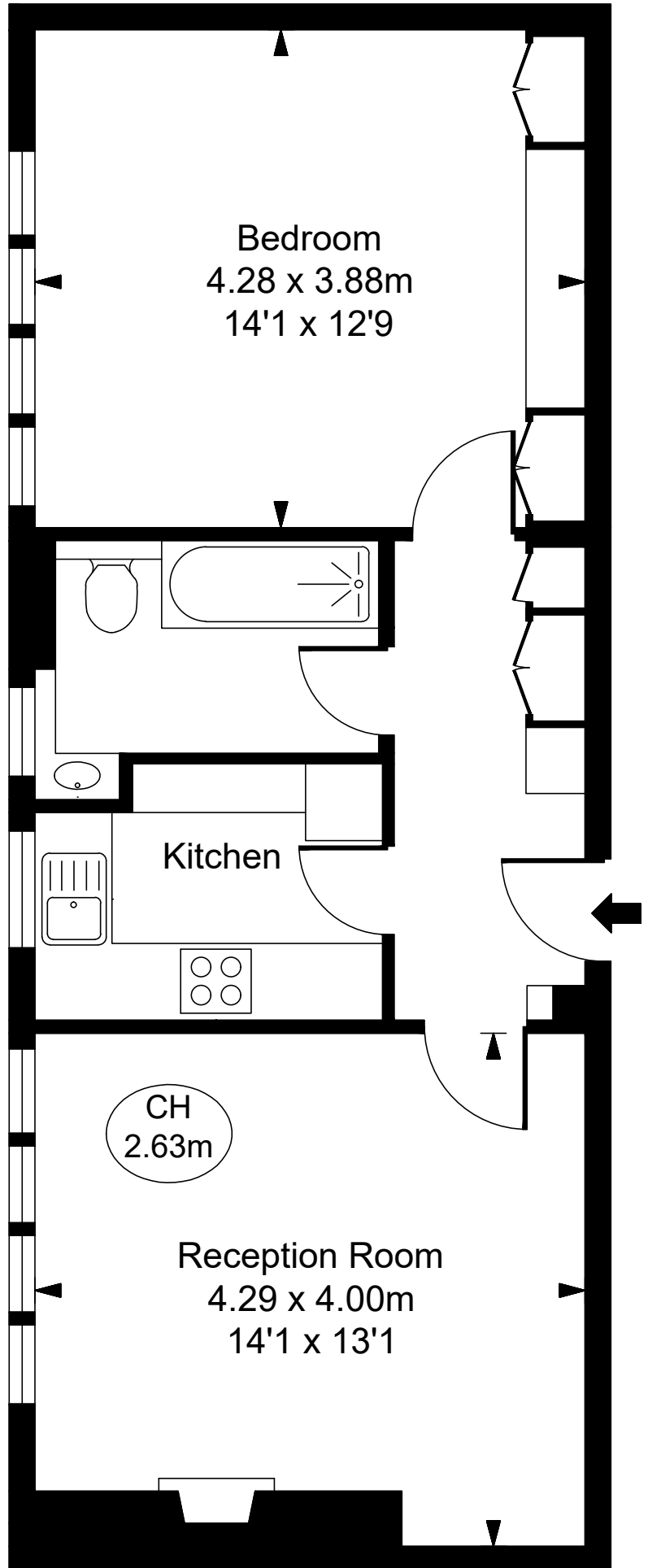


52 Richmond Court,
Sloane Street, SW1X
Approximate Gross Internal Area
50.71 sq m / 546 sq ft
(CH = Ceiling Heights)



Sixth Floor

ILLUSTRATION FOR IDENTIFICATION PURPOSES ONLY
ALL MEASUREMENTS ARE MAXIMUM, AND INCLUDE WINDOW BAYS AND WARDROBES WHERE APPLICABLE
THIS PLAN MUST NOT BE REPRODUCED BY ANY OTHER PERSON WITHOUT PERMISSION