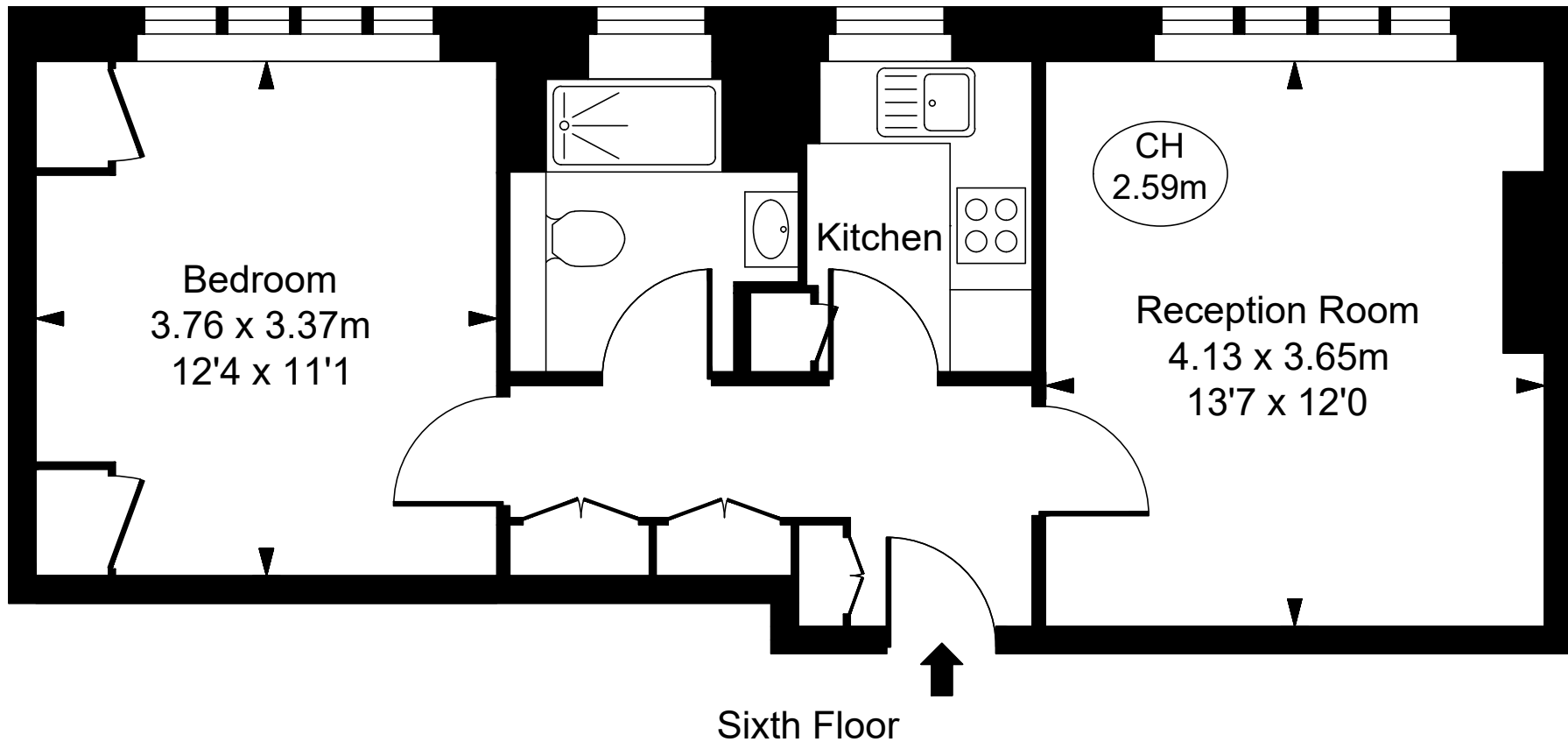


61 Richmond Court,
200 Sloane Street, SW1X 9QU



Approximate Gross Internal Area
43.18 sq m / 465 sq ft

(CH = Ceiling Heights)



This plan is not to scale. It is for guidance and not for valuation purposes.
All measurements and areas are approximate only, and have been prepared in accordance with the current edition of the RICS Code of Measuring Practice.
© Fulham Performance