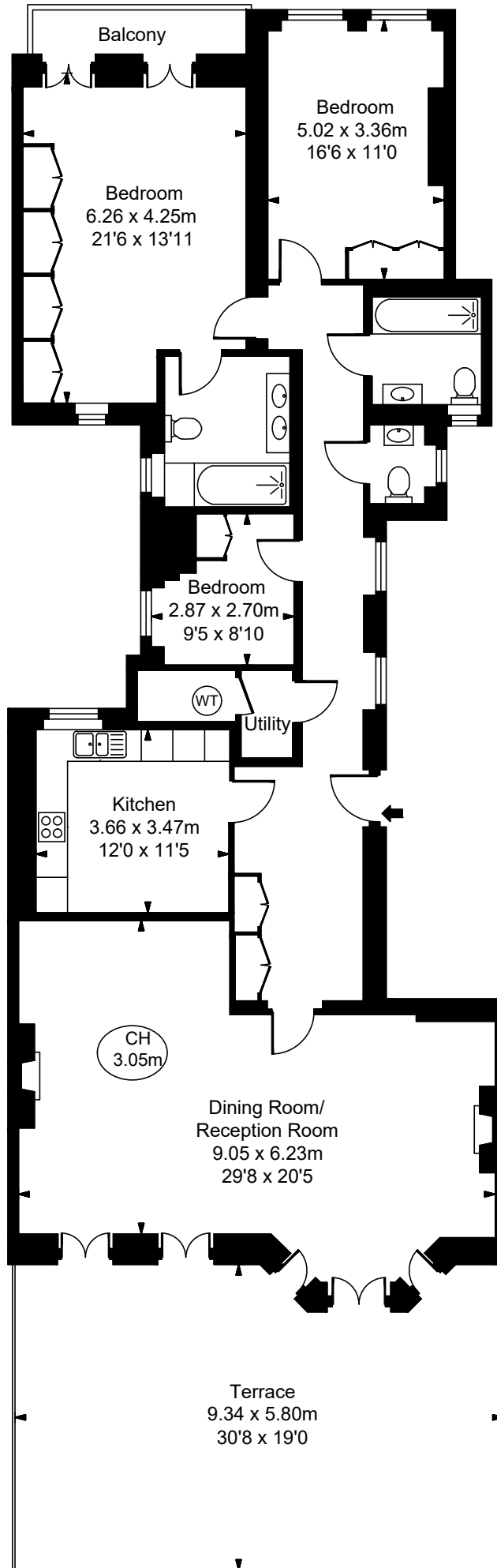


22 St George's Court,
Gloucester Road, SW7 4QZ

Approximate Gross Internal Area
155.71 sq m / 1,676 sq ft

(CH = Ceiling Heights)



First Floor

This plan is not to scale. It is for guidance and not for valuation purposes.

All measurements and areas are approximate only, and have been prepared in accordance with the current edition of the RICS Code of Measuring Practice.

© Fulham Performance