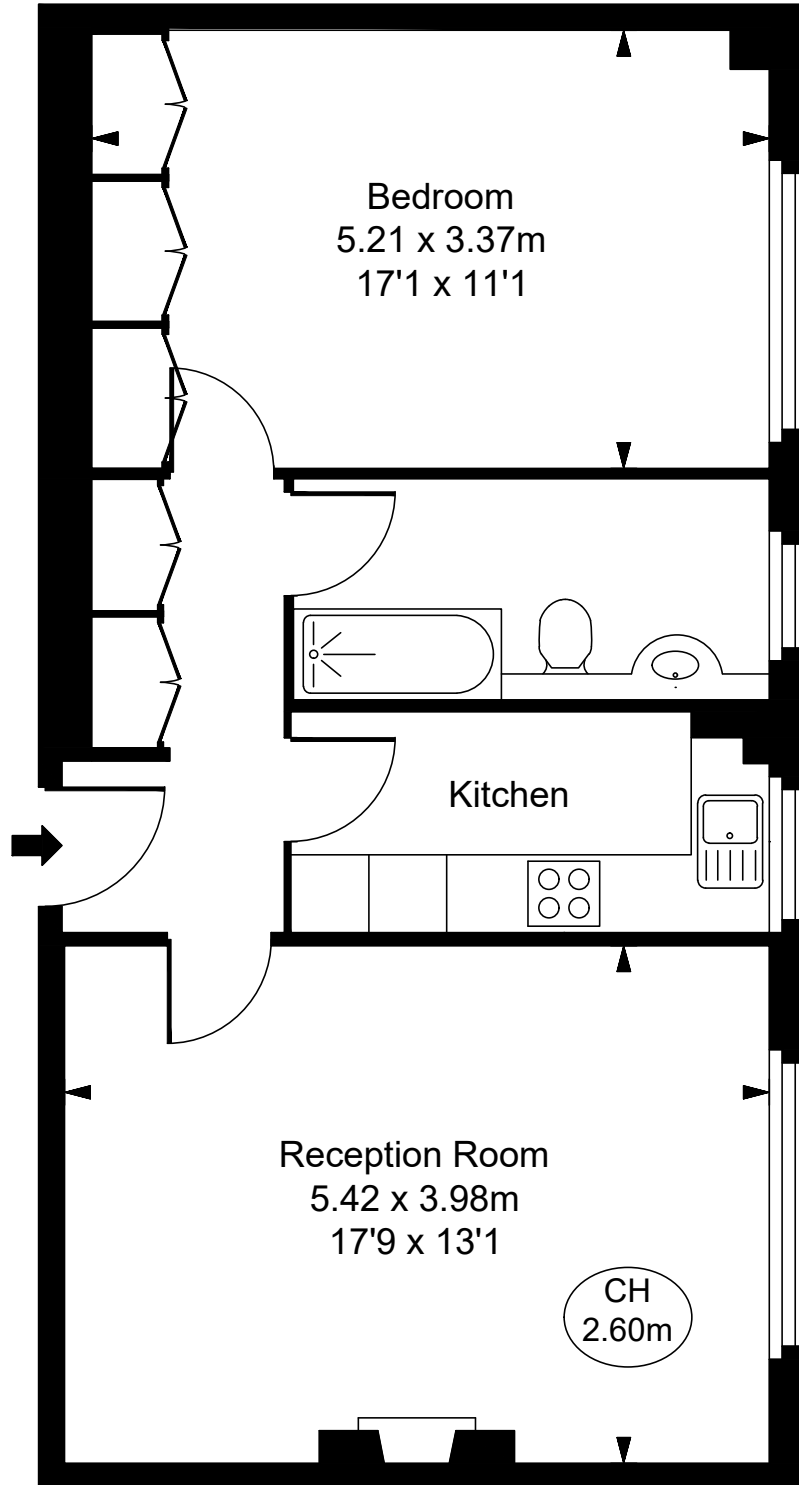


48 Richmond Court,  
Sloane Street, SW1X 9QU

Approximate Gross Internal Area  
58.57 sq m / 630 sq ft

( CH = Ceiling Heights )



Fifth Floor

This plan is not to scale. It is for guidance and not for valuation purposes.

All measurements and areas are approximate only, and have been prepared in accordance with the current edition of the RICS Code of Measuring Practice.  
© Fulham Performance